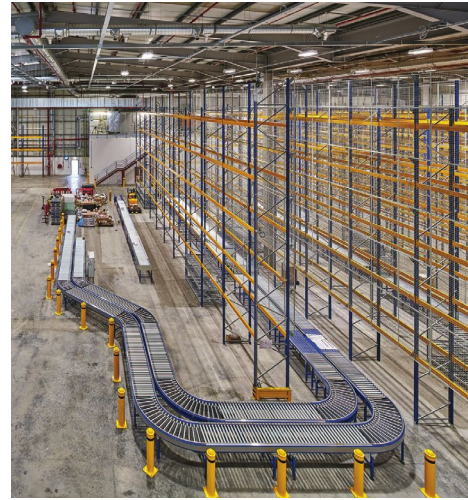
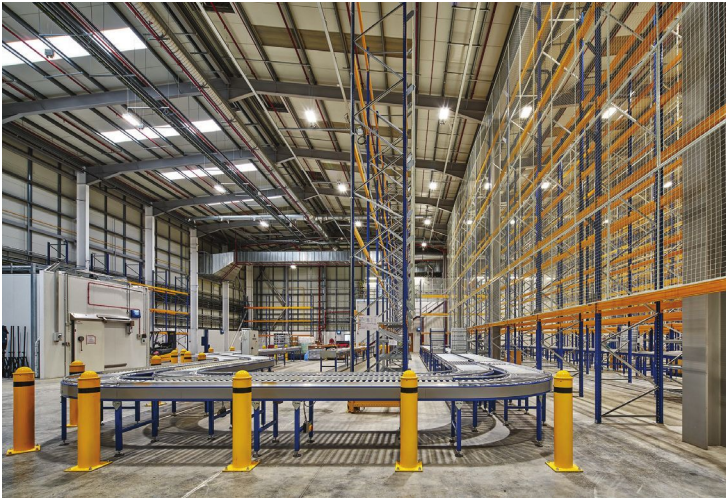




## GILEAD DISTRIBUTION CENTRE Airport Logistics Park, Dublin



### Customer

Airport Logistics Park  
Eagle House,  
Dublin Airport Logistics Park  
Dublin

### Construction Period

September 2015 – January 2016

### Design Team

#### Architects

Wilson Architecture,  
5 Lapps Quay,  
Cork

#### Structural & Services Engineers

Arup,  
15 Oliver Plunkett Street,  
Cork

### DESCRIPTION

Vision Contracting Ltd was appointed as Main Contractor and PSCS to complete the modification to an existing industrial unit to achieve a fit for purpose GDP (Good Distribution Practice) dispatch facility for Gilead Sciences Ireland UC.

The work generally comprised of the upgrading of the existing unit which included the construction of recesses in the existing slab to cater for 2 nr cold rooms and freezer and the installation of a new mezzanine floor including new foundations to support same. Existing translucent cladding on the roof was overlaid. Staff accommodation including a new canteen, IT room, Male and Female toilets and changing rooms was provided on the ground floor. The 1st floor office fit-out included modifications to the lobby and entrance door.

Alterations to the existing floor ensured the aisles achieve a DM2 standard for wire guidance forklift movement. New high bay racking, fork trucks and conveyor system were supplied and installed. New Mechanical & electrical systems were installed along with new HVAC and Sprinkler System.

### KEY FEATURES

- The works were built to a GMP standard
- Validation was critical to the client so early handover of some systems had to be achieved
- The project required the management of a number of Nominated subcontracts and co-ordination of contractors employed directly by the client