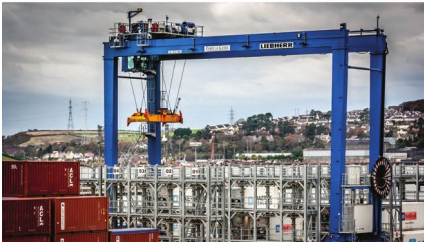
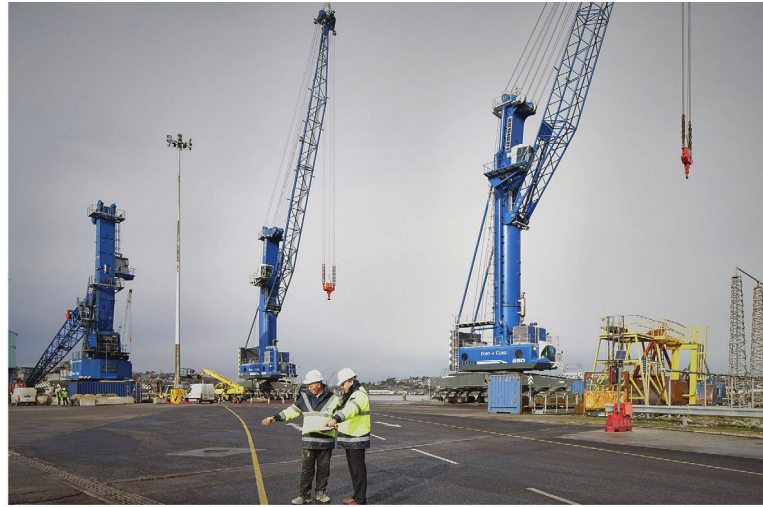




## PORT OF CORK DEEPWATER DOCK Ringaskiddy, Co. Cork



### Customer

Port of Cork Company, Custom House, Custom House Street, Cork

### Construction Period

March – October 2014

### Design Team

#### Architectural, Structural & M&E Consultants

RPS,  
Elmwood House,  
74 Boucher Road,  
Belfast BT12 6RZ.

### DESCRIPTION

Vision Contracting Ltd as main contractor and PSCS carried out extensive building and civil engineering works at the deep water terminal. The improvement works involved the establishment of an 8m wide roadway and pedestrian routes parallel to the quayside. The works also included improvement works at the car park at the entrance to the terminal.

As part of the contract works a new steel framed maintenance building was constructed adjacent to the existing workshops to service the larger container handling vehicles and cranes which operate along the quay. Ancillary works were also completed which included new load bearing parking for quay hoppers, construction of new truck wash facility and the installation of new security kiosk to the port entrance. Significant mechanical, electrical, fire alarm and network services were also completed to service the new and relocated facilities.

### KEY FEATURES

- The main construction works were carried out in the heart of a live & busy Port environment with extensive vehicle movements associated with the Dock operations.
- Continuous access for Port related traffic had to be maintained for the duration of the works.
- Extensive co-ordination & Traffic Management Plans were agreed with the Port Authorities on both a weekly & daily basis.
- Due to the fact that Large Container Ships were docking on more or less a daily basis, programmes were flexible to suit docking delays due to adverse weather conditions.